



 **eModal**<sup>®</sup> Fee  
Manager

More info:  
[AdventeModal.com](https://AdventeModal.com)

**Detention Collections Flow**  
**Minimum Viable Product (MVP) to Support Proof of Concept (POC)**



Advent  




**eModal**

Used by  
**OVER 85**  
port, terminal and  
ocean carrier users



Active in  
**EVERY**  
US port complex



**OVER 200**  
container  
depots  
worldwide



Over **160,000**  
**REGISTERED USERS**

**\$ OVER A BILLION**  
in annual online  
payment processing volume



**OVER 200M**  
monthly container  
cargo transactions

Over **600,000**  
registered intermodal  
**CHASSIS**



**90%** of booked terminal  
appointments, representing  
**37%** of North American  
container volume



Over **43K**  
registered motor carriers and  
**670K** trucks in the eModal  
Drayage Truck Registry



**80% OF NORTH AMERICAN  
MARINE CONTAINERS**  
entered into the eModal watchlist

- ✓ Automatic fee collection of all cargo payments for ports & terminals
  - Order to cash management, reporting & reconciliation of all fees
- ✓ 50+ supply chain fees are currently collected
  - Demurrage, detention, terminal handling, gateway specific fees
  - Pay via Credit Card, ACH Check, or guaranteed invoice
  - Online eCommerce billing, collection, charge backs, refunds & settlement of terminal port fees
- ✓ Reduce overhead staffing to accept payments & provide phone support
- ✓ Dedicated eModal eCommerce team for weekly reconciliation
- ✓ Online web portal for training, e-Learning, video tutorials & user guides
- ✓ Integrated with eModal PreGate and Empty Return Instructions



# What is Needed to Support eModal Detention Collection?

## Container Activity from Ocean Carrier

- Discharge
- Gate-out
- Gate-in empty return
- Communication via 315 or 322 EDI

## Detention Start Date and Details from Ocean Carrier

- Per diem start date and the number of free days
- API call for container details to line system

## Detention Fees Due from Ocean Carrier

- Line system calculates detention
- eModal call to line system for fees due
- eModal call to derive OSRA details
- Communication via API

## eModal Accepts and Processes Customer Payments

- Processing fees can be passed on to the Payor
- Confirmation of payment to line system



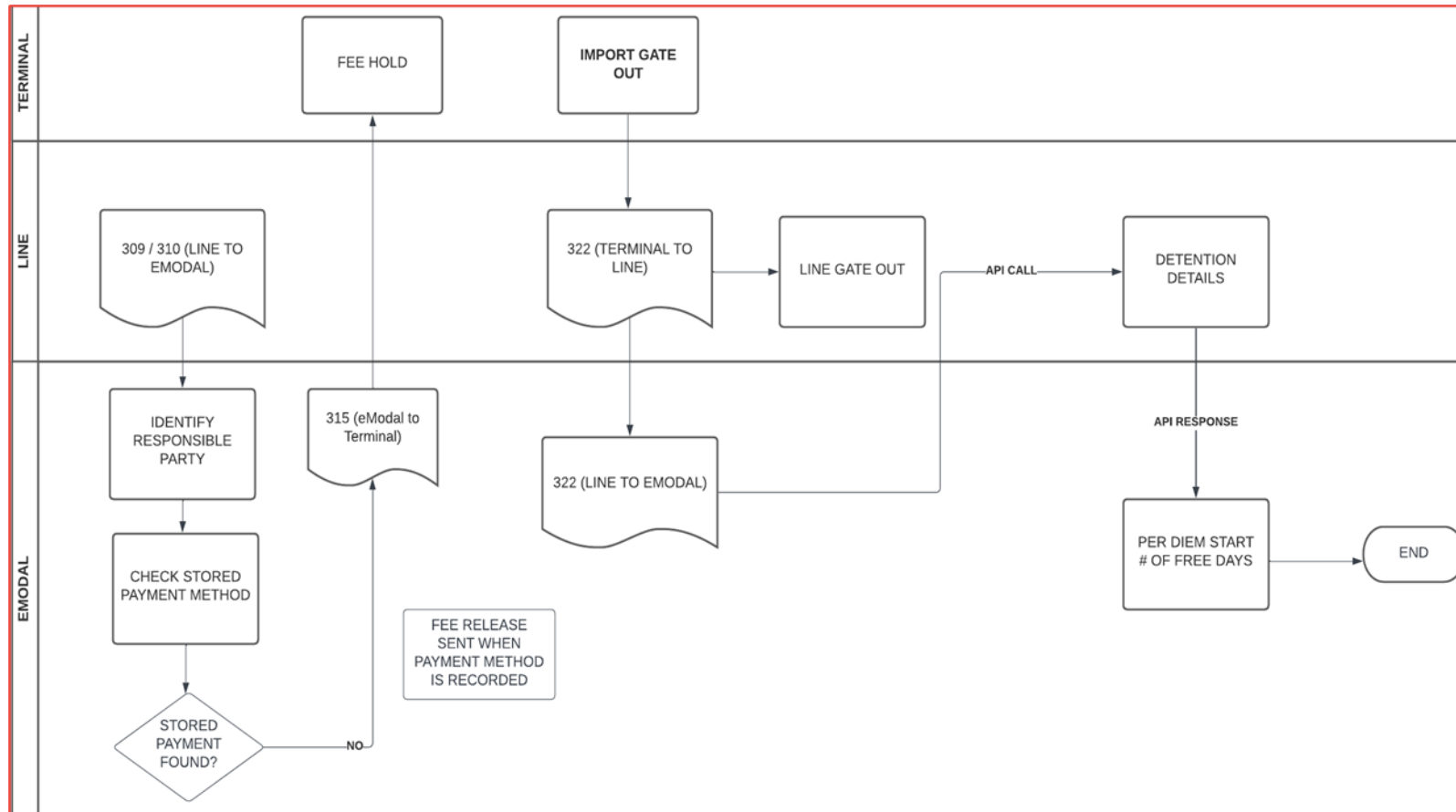
# eModal Detention Flow

## Overview of POC Feature Set

- ✓ Payment of detention charges – Import to empty return
- ✓ Identification of responsible party for charges
- ✓ Proactive, robust notifications for Per Diem start, expiration dates, terminal gate hours and empty return instructions
- ✓ Verification of a saved payment method
- ✓ OSRA complaint invoice creation as events occur
- ✓ Configurable review period to reduce disputes before charges apply
- ✓ Auto-pay features
- ✓ Surcharge capability for late payments, undefined payment profile



# Detention Flow – Gate Out



- Identification of responsible party is Shipper/Consignee for POC via 309/310 EDI
- Verify a saved payment method in eModal to support auto-pay
- Support for hold if save payment method not identified
- Call to Line’s system to record detention start date, # of free days.
- Proactive notifications to responsible party:
  - Link for auto pay setup



# Detention Flow – Saved Payment Method

The screenshot shows the eModal Administration interface for Payment Source Management. The breadcrumb trail includes 'Current Payment Sources', 'Auto Payment Profile', and 'Guarantee Payment Profile'. A sub-header reads 'Expand company tile to set up your payment options'. Below this, a company tile for 'Fred Miller Trucking, LLC' is visible. A table lists payment sources:

Payment Source	Contact Name	Contact Email
Wan Hai Detention Guarantee VISA Ending in 4242	Fred Miller	fred@miller.com

An 'Edit contact details' button is located below the table.

The 'Add payment source' modal is shown with a three-step progress bar: 1 Add payment details, 2 Confirmation, and 3 Complete. The form fields are as follows:

- Select company\*: eModal
- Account type\*: Credit/Debit Card
- Card Details section:
  - NickName\*: Shipper Account
  - Card Type\*: Visa
  - Card Number\*: 4111111111111111
  - My card is in a currency other than USD \$
- Expiration: Month\* 01, Year\* 2024, CVV\* 5555
- Billing information ⓘ



# Detention Flow - Auto Settlement of Charges

## Add conditional profile

Facility

ITS Long Beach

Contact name\*

Sean McChesney

Contact email\*

smcchesney@adventintermodal.c

Payment source\*

USD - Shippers Account Detail(VISA Ending in 1111)

By associating payment method and program, I agree that it will be automatically charged for payment of the invoices generated.

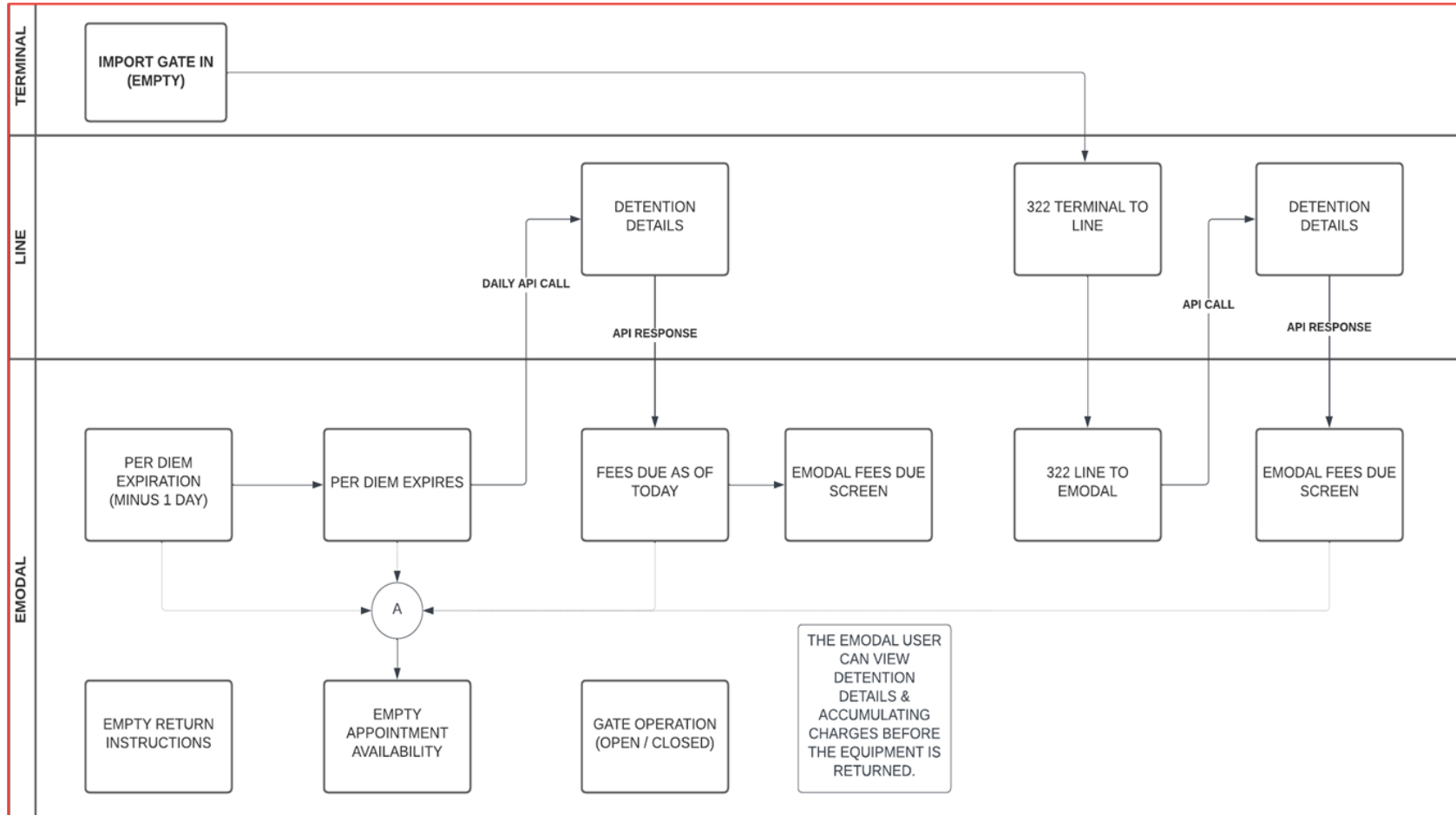
Cancel

Agree

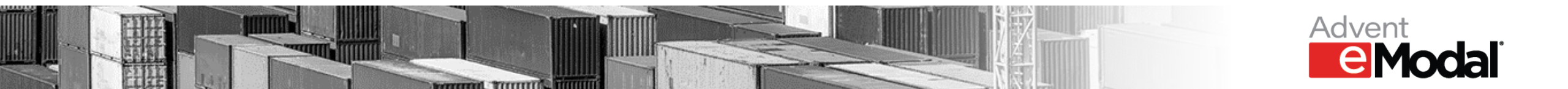
- Secure storage of payment profile for the auto settlement of charges.
- Supports different payment methods by gateway/terminal.



# Detention Flow – Per Diem Start



- Notifications
  - Empty return instructions
  - Appointment availability
  - Gate operations
  - Free time expiration
- Detention details displayed in real time, before equipment return
- Invoice presentation and notification as empty in-gate recorded (no delay)
- Configurable review period
- Additional opportunities to review and correct before fees settled



# Detention Flow – Responsible Party Notifications

- eModal proactively notifies the responsible party throughout the detention lifecycle
- Prior to per diem expiration – eModal will notify the responsible party of the following events:
  - Validation of a saved payment method
  - Empty return instructions and locations
  - Appointment availability at the empty return locations
  - Gate open and close conditions

\* Additional charges may apply to responsible party for notification subscription.



# Detention Flow – Due Charges

**eModal** Due Charges 🛒 1 🔔 ⚙️ ❓ 👤

[Add Selected to Cart](#) Select Company  
ALL

Demurrage and Detention ^

<input type="checkbox"/>	Item		Seller	Description	Due Date	Amount Due
<input type="checkbox"/>	EITU1752855	<a href="#">View Detail</a>	WHL	Empty Detention		165 USD <span>Not ready for payment</span>
<input type="checkbox"/>	TLLU4504860	<a href="#">View Detail</a>	ETSLAX	Empty Detention	10/04/2020	165 USD <a href="#">Add to Cart</a>

Gate Fees ∨



# Detention Flow – OSRA Compliant Details

Category: IMPORT  
Container Number: TGHU6067117  
Port of discharge: OAK  
Carrier: MAERSK SEALAND - USE AGENCY (MAE)  
Facility: SSAT OICT  
First Available Date: 2023-12-21  
Allowed Free Days: 7  
Free Time Start Date: 2023-12-21  
Free Time End Date: 2023-12-27  
Applied demurrage or detention rule: MAT:Tariff 088 Rule 23. For all others: Per carrier's applicable tariff. See SSL Websites.

Tier	Applicable Days	Day Rate	Amount
	4	\$224.00	\$896.00
	4	\$235.00	\$940.00
	1	\$269.00	\$269.00
	24	\$280.00	\$6,720.00
<b>Total</b>			<b>\$8,825.00</b>

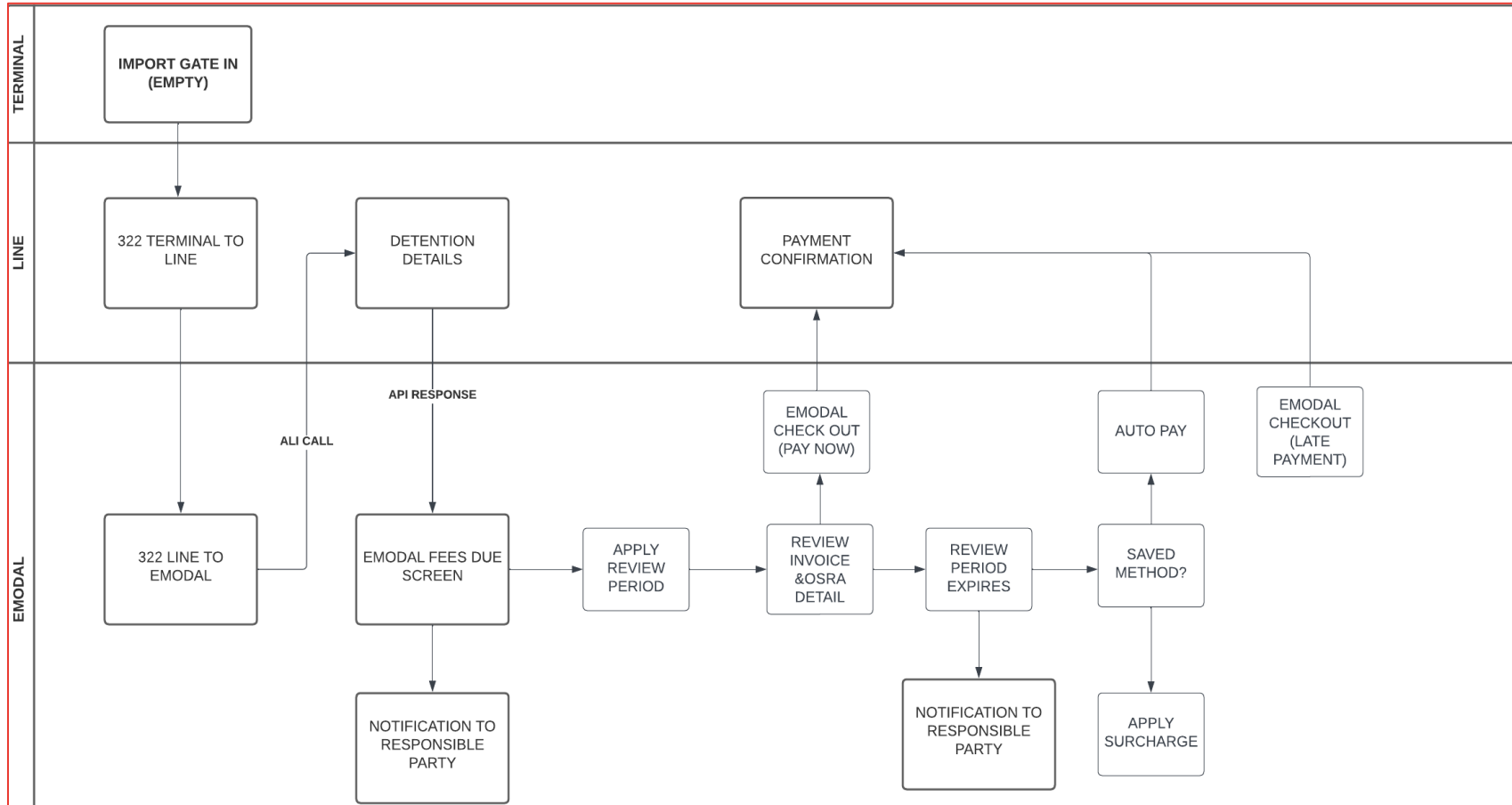
For billing questions, contact biller at 888-898-5893, Opt. 4. For payment questions, contact CREDIT @ 800-422-3505.

Charges are consistent with all Federal Maritime Commission Rules with respect to Detention and Demurrage.

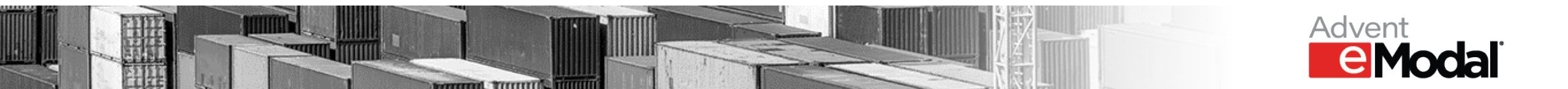
Common Carrier Performance did not cause or contribute to the underlying invoice charges.



# Detention Flow – Fee Payment



- eModal user notified of pending charges due with a link FEES DUE page
- eModal user can review the invoice for accuracy and initiate a payment, enter a saved payment method or elect to wait until the review period expires
- eModal user account is auto-charged at the end of the review period if a payment profile is stored in eModal
- Surcharge is applied if user has not settled through checkout or if payment profile is not defined by the end of the review period



# Detention Flow – Due Charges Invoice Payment

The screenshot shows the 'Due Charges' section of the eModal interface. At the top, there is a navigation bar with the eModal logo and the title 'Due Charges'. To the right of the logo are icons for a shopping cart, notifications, settings, and help. Below the navigation bar, there is a section for 'Invoices' with a dropdown menu for 'Select Company' set to 'ALL'. The main content area contains a table of invoices with the following columns: Item, Description, Due Date, and Amount Due. Two items are listed in the table, each with a 'View Detail' button and an 'Add to Cart' button.

<input type="checkbox"/>	Item	Description	Due Date	Amount Due
<input type="checkbox"/>	001-24000287	Wan Hai Detention Guarantee WHLU7123765	2024-02-10	285.00 USD
<input type="checkbox"/>	001-24000453	Wan Hai Detention Guarantee 2024-01-22	2024-02-10	1,285.00 USD



Advent  
**eModal**

Key customers



AS ONE, WE CAN.



UK/Europe Region



Advent  
**eModal**



**eModal**<sup>®</sup> Fee  
Manager

More info:

[AdventeModal.com](http://AdventeModal.com)

Contact:

Mike Mayhew

[mmayhew@adventintermodal.com](mailto:mmayhew@adventintermodal.com)



Advent  
**eModal**